



Bramber BAKEHOUSE

Annual Report 2023



**The Queen's Award
for Voluntary Service**

Registered charity 1172837 | Company number 09437477





Contents

03	Welcome
04	Introduction from our Chair of Trustees and CEO
05	Charitable Objectives
06	The Need
07	Theory of Change
08	Achievements & Highlights
11	Plans for the Future
12	Structure, Governance & Management
13	Annual Accounts
26	Funders & Partnerships
27	References & Administrative Information

Welcome to Bramber Bakehouse

We are an award-winning charity dedicated to empowering women who have faced abuse, exploitation, or displacement.

At Bramber Bakehouse, we believe in the transformative power of baking, the delivery of wellbeing sessions and life skill support within a safe, nurturing community.

Our mission is to support every female survivor to lead a healthy and purposeful life.



Our Impact

39

women helped in the last 12 months, a 50% growth from 2022

93

women directly received our support since 2016*

174

programme days delivered

59

wellbeing sessions delivered

BAKING LESSONS

Our baking lessons provide a therapeutic environment where women can learn together, build a community, and grow in confidence.

WELLBEING SUPPORT

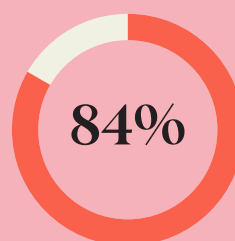
Trauma-informed wellbeing sessions are designed to equip women with the tools they need to improve their mental health and wellbeing.

LIFE SKILLS

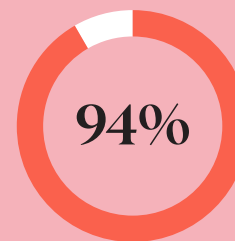
Person-centred support helps women create future pathways, identifying strengths and goals whilst gaining skills for education, volunteering or paid employment.

LASTING COMMUNITY

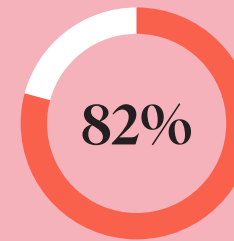
Women graduate and receive regular one-to-one support through a befriender or mentor, with access to safe, sustainable volunteering or employment routes.



of women felt accepted or that they belonged to a community



of women felt they had learned how to look after their mental wellbeing



of women felt more motivated in life or that they had a better idea of their goals for the future



of our graduates would recommend us to another woman in need

*Since 2021, we have increased our capacity and can now accommodate up to 48 women a year, an increase of 500%.

Introduction from our Chair of Trustees and CEO

We are proud to present the Bramber Bakehouse Annual Report for the year ending 31 December 2023.

It has been an important year for the charity. On 1st January 2023, Bramber Bakehouse embarked on the first year of an ambitious Three-Year Plan, delivering an exceptionally high standard of trauma-informed care for women who've experienced gender-based violence, exploitation, or displacement. Our results speak for themselves; with 100% of women recommending our services to another female in need. Our reputation for delivering high-quality, person-centred care is well-earned, and we are continuously in awe of the progress women make in envisioning a brighter future for themselves and their families.

Over the past 12 months, we have laid a solid foundation. We've invested in our systems and processes, enhanced ways for women to access our services, developed detailed monitoring and evaluation methods, recruited essential roles to strengthen our team and increased our capacity by 50% with the introduction of additional programmes throughout the year.

Our proudest achievement has been the design and development of our ongoing support services, including befriending and mentoring helping women to reduce social isolation, increase connections, and gain skills for future volunteering or paid employment. We deeply value listening to and responding to feedback, and we hope this demonstrates our commitment to continually improving our services in a data-driven way.

Our data indicates that 100% of the women referred to us have experienced trauma due to past experiences. Sadly, many women are left struggling with their mental, physical and emotional health. As a result, we continue to invest in our wellbeing sessions, diving deeper into trauma-informed practice, working closely with our partners to ensure women receive the best possible care.

We think we're onto a good thing. 94% of women felt they had learned how to look after their mental wellbeing through our support. Additionally, we are receiving more referrals from social prescribers, GPs and midwives than ever before. One of our graduates described our services as 'therapy without therapy', and we agree – it's a unique approach but, we're seeing positive outcomes, helping women lead healthier, more purposeful lives.

This report offers a moment to pause and reflect on our achievements. Our community of supporters and funders, along with our ever-growing team of trustees, staff and volunteers remain essential to our success. We raise a glass to you all – thank you for making this past year possible. Here's to a brighter, better future for women across Sussex.



Lucy Butt
CEO & Co-founder



Frances Duncan
Chair of Trustees



Charitable Objectives

Bramber Bakehouse works for the public benefit, the relief and assistance of women who are victims of oppression, domestic abuse and/or any form of violence or discrimination in any part of the world by providing support, opportunities and/or internships with Bramber Bakehouse (or any other partnered bakery) to encourage the development and learning of new skills to enable integration back into the community and society as a whole.

“I feel the change from last year, I did not trust a person. I was afraid a lot and I did not have the courage to mix with people, until I came here. I learned many things like joy, optimism, self-confidence and love.”

“The best thing about Bramber Bakehouse is the care and support they have shown us and not forgetting the motivation they have given us.”



The need for our service continues to grow.

Recorded cases of Violence Against Women & Girls (VAWG) increased by 37% between 2018 - 2023, now running at **3,000 offences a day**

16,938 people were referred to the Home Office in 2022 for human trafficking, modern slavery or exploitation

(a 33% rise on the previous year)

Two million women are estimated to be victims of violence perpetrated by men each year

We want to ensure every woman who walks through our doors has access to the holistic, trauma-informed care they need.

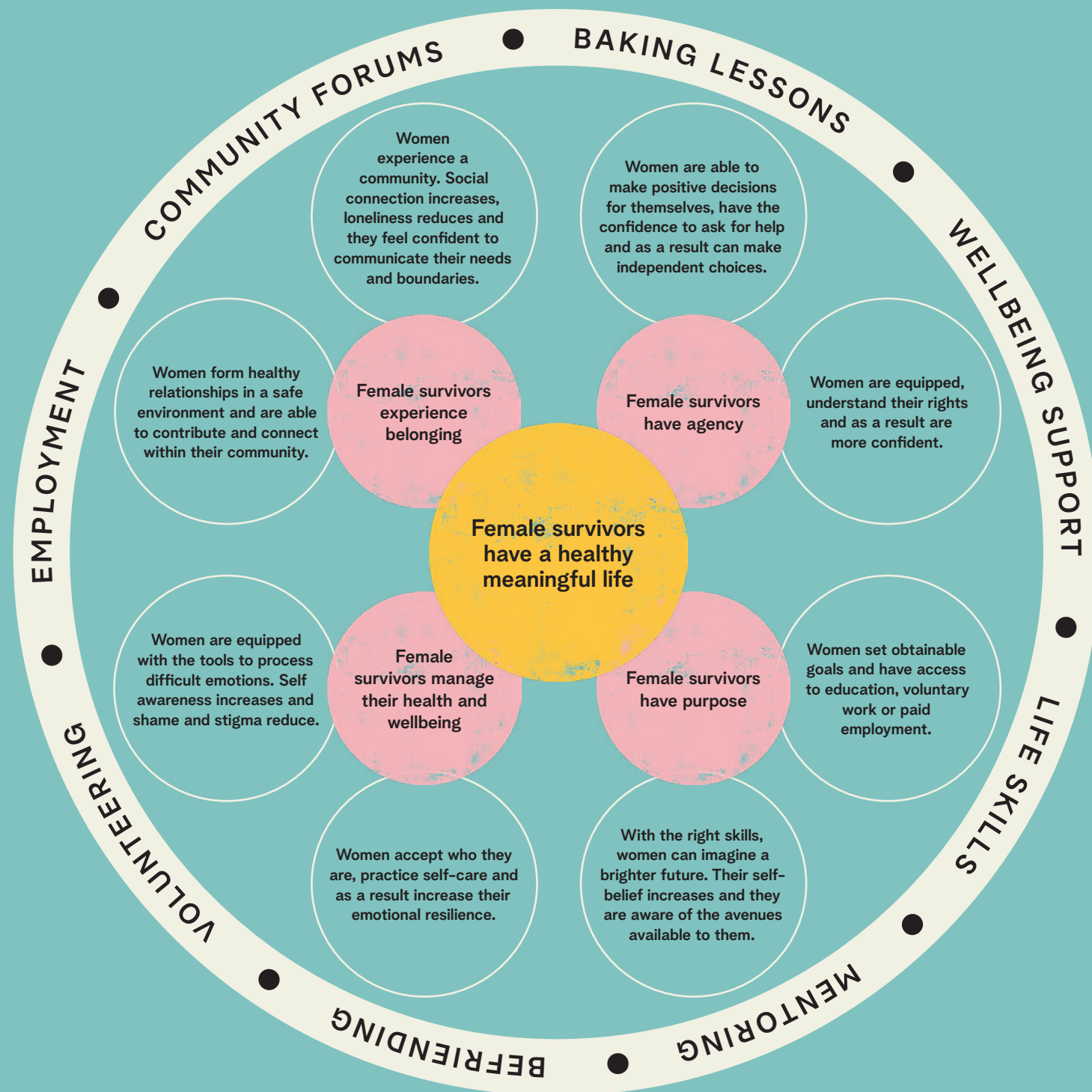
In 2023, we were able to offer places to 64% of women referred to us

An accessible space and further resources to deliver our programme will see an increase in the number of referrals we are able to accept onto our programme.

Theory of Change

We consulted with graduates of the Bramber Bakehouse programme, their support workers, our volunteers and frontline staff to create our Theory of Change. We took time to consider the barriers women face and the positive changes our service can bring about to overcome these.

Using this, we've invested in our monitoring & evaluation framework, developing tools to ensure we're data-led and responding to the needs of those we support.



Achievements & Highlights

This Annual Report covers the first year of our ambitious Three Year Plan, reflecting a period of successful growth, innovation, and expansion across all of the charity's activities.

Data Driven

After establishing our theory of change, we developed a comprehensive monitoring and evaluation framework. This framework allows us to collect essential data and feedback from our graduates, enhancing our service delivery and ensuring that women remain at the heart of our support.

Addressing Demand

In January 2023, we expanded our referral criteria to include women who have faced abuse, exploitation, and displacement, broadening our support for survivors of gender-based violence. As a result, we've seen an increase in partners referring to our service including more referrals from social prescribers, GPs and midwives. We are now able to cater for 64% of women who refer into our service.

Increasing Capacity

As a result of our expansion, we increased our capacity to 12 spaces per cohort. Additionally, in September, we launched a second site to accommodate the rising number of female survivors seeking our services. This enabled us to provide support for 39 women in 2023.

Enhancing our Workforce

We've expanded our team by creating and filling new roles such as Service Manager and Fundraising Manager. Additionally, we have grown our volunteer network to enhance our ability to deliver a high-quality, operationally excellent service.

Infrastructure Investments

We dedicated time to enhancing our infrastructure by transitioning to a new CRM system and migrating our referral process online. This ensures the service is accessible for referral partners and the women they wish to refer. In addition, this has streamlined our internal processes, saving valuable time and money.



A Newfound Purpose

Alex was referred to Bramber Bakehouse by her medical practitioner. As a survivor of domestic abuse, Alex was looking for an opportunity to gain new skills, meet like-minded women and connect with others. Alex had lost her mum just 18 months ago, a loss that left a profound void in her life. Having dedicated years to caring for her, Alex now found herself searching for a new sense of purpose in a world that felt unfamiliar without her mum.

During our time getting to know Alex, we've enjoyed her wonderful sense of humour and her love for making others laugh. She also has a lifetime of hard-earned wisdom, which she generously and sensitively shared with the other women in our programme.

Her journey, from initial hesitation to newfound purpose, encapsulates the essence of what Bramber Bakehouse strives to achieve. Using our strengths-based, trauma-informed approach, we're grateful for the opportunity to share Alex's experience. This story highlights the powerful impact of community, support, and personal growth.



Alex was introduced to Bramber Bakehouse by her medical practitioner. The recommendation to join a community of women in similar situations was a beacon of hope. "I was lonely and the past wasn't great for me," she recalls, "that's what brought me to Bramber Bakehouse – I was surrounded by women with similar backgrounds."

The first day at Bramber Bakehouse was full of emotion for Alex. She was anxious, frequently retreating to the restroom to calm her nerves. "Even my taxi driver could sense my nerves," she shares. However, the support and camaraderie she found there began to ease her anxiety. "I really enjoyed it," she admits.

"Even my taxi driver started to see the change in me each week."

One of the most significant aspects of Alex's experience was the diverse community at Bramber Bakehouse. Initially daunting, the variety of backgrounds and languages soon became a source of inspiration. "We wanted to help each other," Alex says. "I could be of use here." This inclusive environment, where differences were embraced, broadened her understanding of others' lives and struggles.

Alex shares that she experienced acceptance and love in a place where she often feared rejection. "Most religions would say 'nah,' but everyone loved me," she says, reflecting on the acceptance she found at Bramber Bakehouse. This acceptance allowed Alex to be herself and contributed significantly to her happiness and sense of belonging.

A Newfound Purpose (continued)

Alex's journey at Bramber Bakehouse was marked by personal growth and newfound confidence. She recalls how her baking skills, initially a source of uncertainty, became a point of pride. "When our baking teacher complimented my baking, a firework went off in my head! I've done alright here," she beams. The laughter and shared experiences with volunteers and fellow participants created happy memories and a sense of achievement.

The support Alex received at Bramber Bakehouse extended beyond baking. Living with arthritis, Alex recalls the acceptance she felt when she was supported by volunteers and staff who stepped in to help when needed.

"It was selfless. Wonderful,"

she says, expressing gratitude for the help and the friendships formed. Alongside this Alex experienced a newfound purpose: "This gave me a purpose because I wanted to help others," she says.

The most significant change Alex experienced was the powerful, unspoken bond formed with the other women. There was a unique shared understanding and support system amongst the group. "There was a bond there," Alex reflects. "You could choose to speak up, be quiet; there was that silent bond of understanding one another."

Today, Alex continues to receive support from Bramber Bakehouse through their befriending services. Her hopes for the future include spending time with family, volunteering, and staying engaged with the community. "The future's looking good! Bramber Bakehouse kick-started me, and I'm carrying on," she says with optimism.

To any woman considering joining Bramber Bakehouse, Alex has this advice: "Push yourself to go. Because by the end of it, you'll come out wonderful. A different person. You'll think differently. The team bond is just wonderful. Everyone looks out for one another. Don't put your fears before yourself. Just go."

"I'm forever grateful to my medical practitioner for putting me forward for this opportunity."



Alex's story is a testament to the transformative power of baking, wellbeing support and shared community. Her journey from anxiety to confidence, from isolation to community, and from pain to purpose, embodies the mission we have here.

Plans for the Future

Women continue to face multiple barriers and disadvantages. As a result we are wholly committed to ensuring every woman in need is able to access the life-changing support she needs to move forward.

In January 2023, we announced our three year strategic plan focused on operational excellence, sustainability and growth. Year 1 has been completed successfully and the charity is well-placed to deliver Year 2 of the Three Year Plan. Key elements include:



Operational Excellence

Led by our data, we will continue to develop and deliver effective, trauma-informed services, creating pathways to independence for women who've experienced abuse, exploitation and displacement.

Sustainability

We will continue to build a strong community of trusted partnerships. Alongside this, we'll create new ways to generate income, creating a healthy, stable future for the charity to thrive.

Growth

We will identify a safe, convenient location to establish a permanent hub working towards a social enterprise model. As a result, we will support more women with new opportunities to learn, build community and step forwards into a positive future.

Structure, Governance & Management

Governance

Bramber Bakehouse is a company limited by guarantee, as defined by the Companies Act 2006, and is governed by its Memorandum and Articles of Association dated 12 February 2015.

The trustees, who are also the directors for the purpose of company law, and who served during the year are set out in the reference and administrative information on page 27.

Recruitment & Appointment of New Trustees

Regular reviews are undertaken to assess the skills of the current trustees and identify any areas for strengthening as we move to meet the growing demand for our services. New trustees are interviewed and appointed by the existing trustees using a formal recruitment process.

Induction & Training of New Trustees

All trustees are provided with an induction to familiarise themselves with the charity. They are briefed on their responsibilities by the existing trustees, and they are also given a Bramber Bakehouse Trustee Welcome Pack (reviewed annually), which sets out the legal responsibilities and the specifics of the Bramber Bakehouse structure. New trustees are also referred to the Charity Commission guide 'The Essential Trustee'. Day-to-day operational responsibility for the charity is delegated to the CEO.

Organisational Structure & Decision Making

The trustees review and approve all policies and follow a three-year strategic plan set from 1 January 2023 to 31 December 2025. The trustees meet quarterly throughout the year and have two annual away days to update and revise the strategy and receive any additional training.

Policies

Policies for relevant areas are maintained, including Safeguarding Adults at Risk, Data Protection, Health & Safety, Conflict of Interest, Complaints Handling and Privacy Policy. The Staff Handbook is made available to all staff and includes a summary of all policies, and this is also shared with new trustees of Bramber Bakehouse.

Volunteers

The trustees are grateful for the invaluable contribution of those who give their time voluntarily to deliver our service. During the 2023 accounting year, Bramber Bakehouse used the services of 25 volunteers. These volunteers are split across the programme and areas including marketing, fundraising and administration.

All staff and volunteers require the relevant DBS check prior to engagement with Bramber Bakehouse and the women we support.



Trustees' Responsibilities Statement


The Trustees, who are also the directors of Bramber Bakehouse for the purpose of company law, are responsible for preparing the Trustees' Report and the financial statements in accordance with applicable law and United Kingdom Accounting Standards (United Kingdom Generally Accepted Accounting Practice).

Company Law requires the Trustees to prepare financial statements for each financial year which give a true and fair view of the state of affairs of the Charity and of the incoming resources and application of resources, including the income and expenditure, of the charitable company for that period. In preparing these financial statements, the Trustees are required to:

- select suitable accounting policies and then apply them consistently;
- observe the methods and principles in the Charities SORP;
- make judgements and estimates that are reasonable and prudent;
- state whether applicable UK Accounting Standards have been followed, subject to any material departures disclosed and explained in the financial statements; and
- prepare the financial statements on the going concern basis unless it is inappropriate to presume that the Charity will continue in operation.

The Trustees are responsible for keeping adequate accounting records that disclose with reasonable accuracy at any time the financial position of the Charity and enable them to ensure that the financial statements comply with the Companies Act 2006. They are also responsible for safeguarding the assets of the Charity and hence for taking reasonable steps for the prevention and detection of fraud and other irregularities.

The Trustees' report was approved by the Board of Trustees on Friday 23rd August 2024, and signed on its behalf by:



Frances Duncan
Chair of Bramber Bakehouse
23rd August 2024



Chanel Naidoo
Trustee
23rd August 2024



Financial Review

In 2023, Bramber Bakehouse had a net deficit of £17,921. Set against total funds brought forward at 1 January 2023 of £115,085, at the end of 2023 we now carry forward total funds of £97,164 consisting of £67,771 unrestricted funds and £29,393 of restricted funds.

Bramber Bakehouse's principal source of funds comes through grants from trusts and foundations and monthly standing orders from independent donors.

The main expenditure remains focused on the charitable activities and service provision to the women we support. This includes significant investment into staff costs, enabling us to meet a growing demand for our service, supporting more women than ever before with new, ongoing support services launched to provide sustainable opportunities for women moving forward.

Any further expenditure is towards accounting, administration fees and general costs which are building blocks to creating a strong, stable charity which can continue to grow and thrive.

Reserves Policy

The trustees have reviewed the reserves policy to ensure that it supports the Charity's strategic goals through a combination of funding initiatives to ensure we continue to help as many women as possible. This has resulted in an updated reserves policy, effective 1st January 2023, whereby the level of free reserves we are working towards for Bramber Bakehouse Charity should be equivalent to six months of annual expenditure. This provides sufficient flexibility to cover any temporary shortfall of incoming resources and to allow the charity to respond immediately to a reasonable range of unforeseen adverse circumstances prior to specific remedial plans being implemented.

Designated funds which have been set aside for the charity out of the unrestricted funds by the Trustees for specific purposes include the Reserve fund of £55,000, which represents approximately 3 months general operating expenditure set aside in line with the charities current reserves policy, and Property fund of £30,000 represents monies set aside to cover the cost of a deposit on a property (premises for the charity to operate).

Risk Management

The Trustees have assessed the major risks to which the Charity is exposed, and are satisfied that systems are in place to mitigate exposure to the major risks.



Independent Examiner's Report

I report to the Trustees on my examination of the financial statements of Bramber Bakehouse (the Charity) for the year ended 31 December 2023.

Responsibilities and basis of report

As the Trustees of the Charity (and also its directors for the purposes of company law) you are responsible for the preparation of the financial statements in accordance with the requirements of the Companies Act 2006 (the 2006 Act).

Having satisfied myself that the financial statements of the Charity are not required to be audited under Part 16 of the 2006 Act and are eligible for independent examination, I report in respect of my examination of the Charity's financial statements carried out under section 145 of the Charities Act 2011 (the 2011 Act). In carrying out my examination I have followed all the applicable Directions given by the Charity Commission under section 145(5)(b) of the 2011 Act.

Independent examiner's statement

I have completed my examination. I confirm that no matters have come to my attention in connection with the examination giving me cause to believe that in any material respect:

1. accounting records were not kept in respect of the Charity as required by section 386 of the 2006 Act; or
2. the financial statements do not accord with those records; or
3. the financial statements do not comply with the accounting requirements of section 396 of the 2006 Act other than any requirement that the accounts give a true and fair view which is not a matter considered as part of an independent examination; or
4. the financial statements have not been prepared in accordance with the methods and principles of the Statement of Recommended Practice for accounting and reporting by charities applicable to charities preparing their accounts in accordance with the Financial Reporting Standard applicable in the UK and Republic of Ireland (FRS 102).

I have no concerns and have come across no other matters in connection with the examination to which attention should be drawn in this report in order to enable a proper understanding of the financial statements to be reached.



John Caladine FCCA CTA FCIE
Friday 23rd August 2024

Caladine Limited
Chantry House
22 Upperton Road
Eastbourne
East Sussex
BN21 1BF



Accounts

Statement of financial activities including income and expenditure account

For the period ended 31 December 2023

The statement of financial activities includes all gains and losses recognised in the year.
All income and expenditure derive from continuing activities.

		Unrestricted funds 2023	Restricted funds 2023	Total 2023	Unrestricted funds 2022	Restricted funds 2022	Total 2022
	Notes	£	£	£	£	£	£
Income from:							
Donations and legacies	3	78,598	147,247	225,845	171,872	1,660	173,532
Charitable activities	4	960	50	1,010	339	-	339
Total income		79,558	147,297	226,855	172,211	1,660	173,871
Expenditure on:							
Raising funds	5	70,546	-	70,546	28,731	-	28,731
Charitable activities	6	51,808	122,422	174,230	84,324	20,372	104,696
Total expenditure		122,354	122,422	244,776	113,055	20,372	133,427
Net incoming/(expenditure)							
		(42,796)	24,875	(17,921)	59,156	(18,712)	40,444
Transfers between funds	16	626	(626)	-	6,982	(6,982)	-
Net movement in funds							
	8	(42,170)	24,249	(17,921)	66,138	(25,694)	40,444
Fund balances at 1 January 2023		109,941	5,144	115,085	43,803	30,838	74,641
Fund balances at 31 December 2023							
		67,771	29,393	97,164	109,941	5,144	115,085

Accounts

Statement of financial position

As at 31 December 2023

		2023	2022
	Notes	£	£
Fixed assets			
Property, plant and equipment	12	5,928	7,475
Current assets			
Trade and other receivables	13	9,550	7,355
Cash at bank and in hand		86,713	108,561
		96,263	115,916
Current liabilities	14	(5,027)	(8,306)
Net current assets		91,236	107,610
Net assets		97,164	115,085
The funds of the Charity			
Restricted income funds	16	29,393	5,144
Unrestricted funds		67,771	109,941
		97,164	115,085

The company is entitled to the exemption from the audit requirement contained in section 477 of the Companies Act 2006, for the year ended 31 December 2023.

The directors acknowledge their responsibilities for complying with the requirements of the Companies Act 2006 with respect to accounting records and the preparation of financial statements.

The members have not required the company to obtain an audit of its financial statements for the year in question in accordance with section 476.

These financial statements have been prepared in accordance with the provisions applicable to companies subject to the small companies regime.

The financial statements were approved by the Trustees on Friday 23rd August 2024.



Chanel Naidoo
Trustee

Company Registration No. 09437477 (England and Wales)



Notes to the financial statements

For the period ended 31 December 2023

1 Accounting policies

Company information

Bramber Bakehouse is a private company limited by guarantee incorporated in England and Wales. The registered office is Chantry House, 22 Upperton Road, Eastbourne, East Sussex, BN21 1BF.

1.1 Accounting convention

The financial statements have been prepared in accordance with the Charity's Memorandum and Articles of Association, the Companies Act 2006 and "Accounting and Reporting by Charities: Statement of Recommended Practice applicable to charities preparing their accounts in accordance with the Financial Reporting Standard applicable in the UK and Republic of Ireland (FRS 102) (effective 1 January 2019)". The Charity is a Public Benefit Entity as defined by FRS 102.

The Charity has taken advantage of the provisions in the SORP for charities applying FRS 102 Update Bulletin 1 not to prepare a Statement of Cash Flows.

The financial statements are prepared in sterling, which is the functional currency of the Charity. Monetary amounts in these financial statements are rounded to the nearest £.

The financial statements have been prepared under the historical cost convention. The principal accounting policies adopted are set out below.

1.2 Going concern

At the time of approving the financial statements, the Trustees have a reasonable expectation that the Charity has adequate resources to continue in operational existence for the foreseeable future. Thus the Trustees continue to adopt the going concern basis of accounting in preparing the financial statements.

1.3 Charitable funds

Unrestricted funds are available for use at the discretion of the Trustees in furtherance of their charitable objectives.

Restricted funds are subject to specific conditions by donors as to how they may be used. The purposes and uses of the restricted funds are set out in the notes to the financial statements.

1.4 Income

Income is recognised when the Charity is legally entitled to it after any performance conditions have been met, the amounts can be measured reliably, and it is probable that income will be received.

Cash donations are recognised on receipt. Other donations are recognised once the Charity has been notified of the donation, unless performance conditions require deferral of the amount. Income tax recoverable in relation to donations received under Gift Aid or deeds of covenant is recognised at the time of the donation.

Legacies are recognised on receipt or otherwise if the Charity has been notified of an impending distribution,

the amount is known, and receipt is expected. If the amount is not known, the legacy is treated as a contingent asset.

Donated goods are measured at fair value, with an equivalent amount recognised as charitable expenditure.

The charity relies significantly upon volunteers. However given the impracticality of measuring their contribution for accounting purposes, volunteer contributions have not been included as income.

1.5 Expenditure

Expenditure is recognised when an obligation exists, payment is probable and the amount can be measured reliably.

1.6 Property, plant and equipment

Property, plant and equipment are initially measured at cost and subsequently measured at cost or valuation, net of depreciation and any impairment losses.

Depreciation is recognised so as to write off the cost or valuation of assets less their residual values over their useful lives on the following basis:

Computers	20% Straight line
-----------	-------------------

Property, plant and equipment purchases above £500 are capitalised.

The gain or loss arising on the disposal of an asset is determined as the difference between the sale proceeds and the carrying value of the asset, and is recognised in the statement of financial activities.

Notes to the financial statements (continued)

For the period ended 31 December 2023

1.7 Impairment of non-current assets

At each reporting end date, the Charity reviews the carrying amounts of its tangible assets to determine whether there is any indication that those assets have suffered an impairment loss. If any such indication exists, the recoverable amount of the asset is estimated in order to determine the extent of the impairment loss (if any).

1.8 Cash and cash equivalents

Cash and cash equivalents include cash in hand, deposits held at call with banks, other short-term liquid investments with original maturities of three months or less, and bank overdrafts. Bank overdrafts are shown within borrowings in current liabilities.

1.9 Financial instruments

The Charity has elected to apply the provisions of Section 11 'Basic Financial Instruments of FRS 102 to all of its financial instruments.

Financial instruments are recognised in the Charity's balance sheet when the Charity becomes party to the contractual provisions of the instrument.

Financial assets and liabilities are offset, with the net amounts presented in the financial statements, when there is a legally enforceable right to set off the recognised amounts and there is an intention to settle on a net basis or to realise the asset and settle the liability simultaneously.

Basic financial assets

Basic financial assets, which include trade and other receivables and cash and bank balances, are initially measured at transaction price including transaction costs and are subsequently carried at amortised cost using the effective interest method unless the arrangement constitutes a financing transaction, where the transaction is measured at the present value of the future receipts discounted at a market rate of interest. Financial assets classified as receivable within one year are not amortised.

Basic financial liabilities

Basic financial liabilities, including trade and other payables and bank loans are initially recognised at transaction price unless the arrangement constitutes a financing transaction, where the debt instrument is measured at the present value of the future payments discounted at a market rate of interest. Financial liabilities classified as payable within one year are not amortised.

Debt instruments are subsequently carried at amortised cost, using the effective interest rate method.

Trade payables are obligations to pay for goods or services that have been acquired in the ordinary course of operations from suppliers. Amounts payable are classified as current liabilities if payment is due within one year or less. If not, they are presented as non-current liabilities. Trade payables are recognised initially at transaction price and subsequently measured at amortised cost using the effective interest method.

Derecognition of financial liabilities

Financial liabilities are derecognised when the Charity's contractual obligations expire or are discharged or cancelled.

1.10 Employee benefits

The cost of any unused holiday entitlement is recognised in the period in which the employee's services are received.

Termination benefits are recognised immediately as an expense when the Charity is demonstrably committed to terminate the employment of an employee or to provide termination benefits.

1.11 Retirement benefits

Payments to defined contribution retirement benefit schemes are charged as an expense as they fall due.

2 Critical accounting estimates and judgements

In the application of the Charity's accounting policies, the Trustees are required to make judgements, estimates and assumptions about the carrying amount of assets and liabilities that are not readily apparent from other sources. The estimates and associated assumptions are based on historical experience and other factors that are considered to be relevant. Actual results may differ from these estimates.

The estimates and underlying assumptions are reviewed on an ongoing basis. Revisions to accounting estimates are recognised in the period in which the estimate is revised where the revision affects only that period, or in the period of the revision and future periods where the revision affects both current and future periods.

Notes to the financial statements

For the period ended 31 December 2023

3 Income from donations and legacies

	Unrestricted funds 2023	Restricted funds 2023	Total 2023	Unrestricted funds 2022	Restricted funds 2022	Total 2022
	£	£	£	£	£	£
Donations and gifts	16,259	-	16,259	12,925	-	12,925
Grants	62,339	147,247	209,586	158,947	1,660	160,607
	78,598	147,247	225,845	171,872	1,660	173,532
Donations and gifts						
Donations	13,704	-	13,704	11,238	-	11,238
Gift aid	2,555	-	2,555	1,687	-	1,687
	16,259	-	16,259	12,925	-	12,925

4 Income from charitable activities

	Unrestricted funds 2023	Restricted funds 2023	Total 2023	Unrestricted funds 2022	Restricted funds 2022	Total 2022
	£	£	£	£	£	£
Baking and wellbeing						
Sale of goods	960	50	1,010	339	-	339

Notes to the financial statements

For the period ended 31 December 2023

5 Expenditure on raising funds

	Unrestricted funds 2023	Unrestricted funds 2022
	£	£
Fundraising and publicity		
Fundraising platform fees	1,227	-
Fundraising agents	19,413	16,468
Advertising	7,926	3,243
Subcontracted staff	21,180	8,400
Staff costs	20,800	-
	70,546	28,111
Trading costs		
Other trading activities	-	620
	70,546	28,731

6 Expenditure on charitable activities

	2023	2022
	£	£
Direct costs		
Staff costs	100,874	56,651
Depreciation and impairment	2,146	2,026
Workshops	6,708	2,710
Travel	8,907	5,472
Communication and marketing	1,240	8,315
Postage, freight and courier	1,460	860
Staff training and development	1,973	1,171
Reflective practice	142	360
Office equipment and storage	3,224	901
Premises rent	14,345	5,340
Kitchen hire	6,802	2,678
Events	1,709	-
	149,530	86,484
Share of support and governance costs (see note 7)		
Support	12,566	9,708
Governance	12,134	8,504
	174,230	104,696
Analysis by fund		
Unrestricted funds	51,808	84,324
Restricted funds	122,422	20,372
	174,230	104,696

Notes to the financial statements

For the period ended 31 December 2023

7 Support costs allocated to activities		
	2023	2022
	£	£
Subscriptions and professional fees	2,220	1,875
Sundry expenses	1,043	1,136
Technical support	2,899	2,224
Utilities	-	1,802
Insurance	645	524
Recruitment	5,759	2,147
Governance costs	12,134	8,504
	24,700	18,212
Analysed between:		
Programme	24,700	18,212
Governance costs comprise		
Accountancy and Independent Examiners fees	2,580	2,580
Legal and professional	7,923	1,980
Bank fees	80	78
DBS checks	243	141
Payroll fees	1,308	900
Training	-	700
Finance manager	-	2,125
	12,134	8,504

8 Net movement in funds		
	2023	2022
	£	£
The net movement in funds is stated after charging/(crediting):		
Depreciation of owned property, plant and equipment	2,146	2,026

9 Trustees

None of the Trustees (or any persons connected with them) received any remuneration or benefits from the Charity during the year.

10 Employees		
The average monthly number of employees during the period was:		
	2023	2022
	4	3
Employment costs		
	£	£
Wages and salaries	113,972	55,001
Social security costs	4,284	-
Other pension costs	3,418	1,650
	121,674	56,651
Remuneration of key management personnel		
The remuneration of key management personnel was as follows:		
	2023	2022
Aggregate compensation	44,297	24,720

There were no employees whose annual remuneration was more than £60,000.

Notes to the financial statements

For the period ended 31 December 2023

11 Taxation

The charity is exempt from taxation on its activities because all its income is applied for charitable purposes.

12 Property, plant and equipment

	Computers
£	
Cost	
At 1 January 2023	10,131
Additions	599
At 31 December 2023	10,730
Depreciation and impairment	
At 1 January 2023	2,656
Depreciation charged in the year	2,146
At 31 December 2023	4,802
Carrying amount	
At 31 December 2023	5,928
At 31 December 2022	7,475

13 Trade and other receivables

	2023	2022
£		
Amounts falling due within one year:		
Other receivables	9,550	5,900
Prepayments and accrued income	-	1,455
	9,550	7,355

14 Current liabilities

	2023	2022
£		
Other taxation and social security	2,834	897
Trade payables	163	5,549
Accruals and deferred income	2,040	1,860
	5,027	8,306

15 Retirement benefit schemes

	2023	2022
£		
Defined contribution schemes		
Charge to profit or loss in respect of defined contribution schemes	3,418	1,650

The Charity operates a defined contribution pension scheme for all qualifying employees. The assets of the scheme are held separately from those of the Charity in an independently administered fund.



Notes to the financial statements

For the period ended 31 December 2023

16 Restricted funds

The restricted funds of the charity comprise the unexpended balances of donations and grants held on trust subject to specific conditions by donors as to how they may be used.

The Programme costs fund represents monies given towards staff and other running costs of workshops.

The Equipment fund represents a grant given to purchase printers and IT equipment. A transfer of £599 has been made to Unrestricted funds which represent the purchase of a computer capitalised. The remaining £27 transfer represents the remaining surplus on funds transferred to Unrestricted funds.

	At 1 January 2023	Incoming resources	Resources expended	Transfers	At 31 December 2023
	£	£	£	£	£
Programme costs	4,790	146,297	(121,694)	-	29,393
Equipment	354	1,000	(728)	(626)	-
	5,144	147,297	(122,422)	(626)	29,393
Previous year:	At 1 January 2022	Incoming resources	Resources expended	Transfers	At 31 December 2022
IT Fund	5,838	-	(162)	(5,676)	-
Baker Fund	5,000	-	(5,000)	-	-
Programme costs	15,000	-	(10,210)	-	4,790
Programme Coordinator Fund	5,000	-	(5,000)	-	-
Equipment	-	1,660	-	(1,306)	354
	30,838	1,660	(20,372)	(6,982)	5,144

17 Unrestricted funds - The unrestricted funds of the charity comprise the unexpended balances of donations and grants which are not subject to specific conditions by donors and grantors as to how they may be used. These include designated funds which have been set aside out of unrestricted funds by the trustees for specific purposes.

The Reserve Fund represents 3 months of general operational expenditure set aside inline with the charities reserves policy.

The Property Fund represents monies set aside to cover the cost of a deposit on a property.

	At 1 January 2023	Incoming resources	Resources expended	Transfers	At 31 December 2023
	£	£	£	£	£
Reserve Fund	55,000	-	-	-	55,000
Property Fund	30,000	-	-	-	30,000
General funds	24,941	79,558	(122,354)	626	(17,229)
	109,941	79,558	(122,354)	626	67,771
Previous year:	At 1 January 2022	Incoming resources	Resources expended	Transfers	At 31 December 2022
Reserve Fund	17,197	-	-	37,803	55,000
Property Fund	20,606	500	-	8,894	30,000
General funds	6,000	171,711	(113,055)	(39,715)	24,941
	43,803	172,211	(113,055)	6,982	109,941

Notes to the financial statements

For the period ended 31 December 2023

18 Analysis of net assets between funds

	Unrestricted funds 2023	Restricted funds 2023	Total 2023	Unrestricted funds 2022	Restricted funds 2022	Total 2022
	£	£	£	£	£	£
Property, plant and equipment	5,928	-	5,928	7,475	-	7,475
Current assets/(liabilities)	61,843	29,393	91,236	102,466	5,144	107,610
	67,771	29,393	97,164	109,941	5,144	115,085

19 Operating lease commitments

At the reporting end date the Charity had outstanding commitments for future minimum lease payments under non-cancellable operating leases, which fall due as follows:

	2023	2022
	£	£
Within one year	11,448	3,240

20 Related party transactions

There were no disclosable related party transactions during the year (2022 – none).



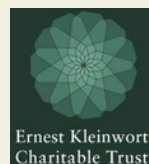
Funders & Partnerships

Bramber Bakehouse is generously supported by Trusts and Foundations, Corporate Partners and individual donors. We are committed to expanding and diversifying our funding sources to achieve our charitable objectives, promote sustainability and facilitate future growth.

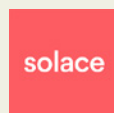
We extend our heartfelt gratitude to the public, companies and other donors who have supported our work in 2023.

In 2023, Bramber Bakehouse received grants totalling £225,845 from Trusts and Foundations and other organisations. This funding has been pivotal in enabling us to meet the rising demand and provide essential support to more women.

Some of our generous funders include:



Referral Partners



Join our community, support our journey and hear from the women we serve by signing up to our newsletter, Facebook and Instagram. We would love to hear from you!

@bramberbakehouse

bramberbakehouse

funding@bramberbakehouse.co.uk

bramberbakehouse.co.uk

References & Administrative Information

Registered name: Bramber Bakehouse

Charity registration number: 1172837

Company registration number: 09437477

Corporate status: The Company is limited by guarantee

Registered office: Chantry House, 22 Upperton Road,
Eastbourne, East Sussex, BN21 1BF

Principal address:
PO BOX 3197, Eastbourne, East Sussex, BN21 3NW

Telephone: 0333 344 7532

Website: www.bramberbakehouse.co.uk

Current Trustees:

Frances Duncan (Chair, appointed 19th July 2022)
Hollin Preston (Trustee & Co-Founder, appointed 12th February 2015)
Nils De Freese (Trustee, appointed 19th July 2022)
Neha Hampton (Trustee, appointed 1st September 2022)
Caitlyn McCarthy (Trustee, appointed 27th June 2023)
Chanel Naidoo (Trustee and Co-Secretary, appointed 21st September 2023)
Colleen Theron (Trustee, resigned 27th June 2023)
Dan Preston (Trustee, resigned 27th June 2023)

Independent Examiner:

John Caladine FCCA CTA FCIE, Caladine Limited,
Chantry House, 22 Upperton Road, Eastbourne,
East Sussex, BN21 1BF

Bankers:

HSBC, 94 Terminus Road, Eastbourne,
East Sussex, BN21 3ND

SMALL TASTE
OF FREEDOM

bramber
BAKEHOUSE



hello@bramberbakehouse.co.uk

Follow us on Instagram
@bramberbakehouse

bramberbakehouse.co.uk



Charity Number: 1172837

