



# BRAMBER BAKEHOUSE

## ANNUAL REPORT 2021

for the period 1 March 2021 to 31 December 2021



**The Queen's Award  
for Voluntary Service**

Registered Charity 1172837

Company Number 09437477

# BRAMBER BAKEHOUSE EXISTS TO SUPPORT AND EMPOWER FEMALE SURVIVORS OF HUMAN TRAFFICKING AND MODERN SLAVERY.



Since launching in 2014, we've witnessed firsthand the complexities faced by survivors because of the harsh and unfortunate events they have experienced. Many face considerable barriers in re-creating and redefining their future with a lack of housing provision, health services, language support, access to education, employment and more.

At Bramber Bakehouse, we work holistically with women, offering a safe space to access skills-based training and wellbeing support, which enable them to overcome these barriers, prepare for education and/or work and integrate into the wider community.

It's been our biggest year to date; we've employed three members of staff, transformed our baking, wellbeing and employability programme and welcomed dozens of women through our doors. We've witnessed positive changes to immigration statuses, seen women enter voluntary work and higher education and built a community who can grow together along the way.

We're looking forward to the many ways in which we can grow to support and empower female survivors, seeing them live full and thriving lives.

**HOLLIN PRESTON**  
Co-Founder

**LUCY BUTT**  
Co-Founder



*Elizabeth II*

**Elizabeth the Second,**

By the Grace of God of the United Kingdom of Great Britain and Northern Ireland  
and of Our other Realms and Territories Queen, Defender of the Faith, to

*Bramber Bakehouse*

*Providing a baking and employability programme  
for women survivors of human trafficking.*

Greeting!

We being cognisant of the said group's outstanding voluntary work in the community,  
and being desirous of showing Our Royal Favour do hereby confer upon it:

**The Queen's Award for Voluntary Service**  
for voluntary service by groups in the community 2020

for such period as the group continues to provide its current service and do  
hereby give permission for the authorised emblem of the said Award to be  
displayed on the group's letterhead and other public material.

Given at Our Court of Saint James's under Our Royal Sign Manual this  
second day of June 2020 in the sixty-ninth year of Our Reign.

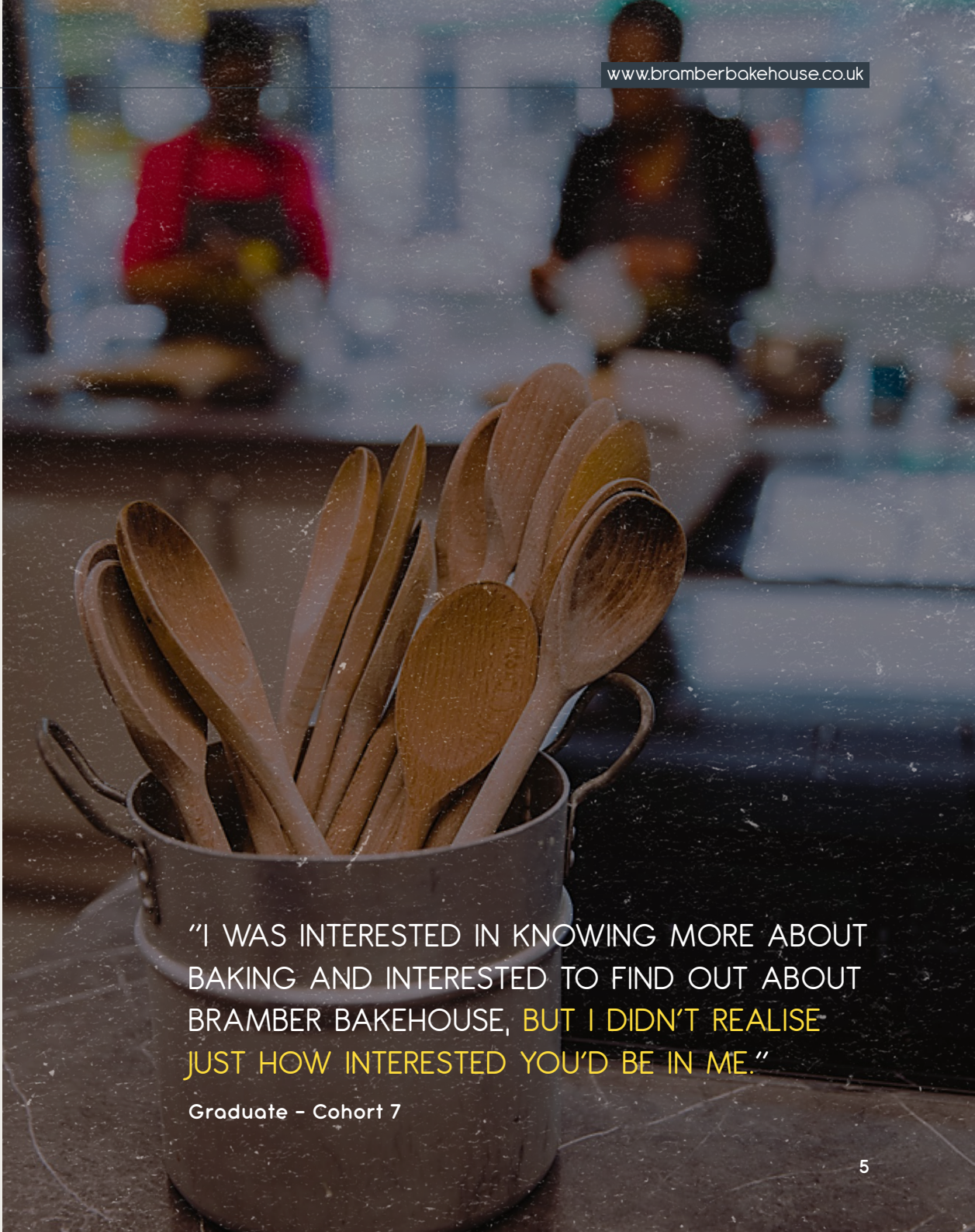


<b>05</b>	<b>TRUSTEES' ANNUAL REPORT</b>
05	CHARITABLE OBJECTIVES
06	WHO WE ARE AND WHAT WE DO
09	THE JOURNEY
10	DEMOGRAPHICS
12	OUR IMPACT
14	HIGHLIGHTS
15	THE FUTURE
16	STRUCTURE, GOVERNANCE & MANAGEMENT
17	STATEMENT OF TRUSTEES' RESPONSIBILITIES
18	FINANCIAL REVIEW
<b>19</b>	<b>ACCOUNTS</b>
28	INDEPENDENT EXAMINER'S REPORT
<b>29</b>	<b>PARTNERS &amp; FUNDERS</b>
31	LEGAL AND ADMINISTRATIVE INFORMATION

# TRUSTEES' ANNUAL REPORT

## CHARITABLE OBJECTIVES

Bramber Bakehouse works for the public benefit, the relief and assistance of women who are victims of oppression, domestic abuse and/or any form of violence or discrimination in any part of the world by providing support, opportunities and/or internships with Bramber Bakehouse (or any other partnered bakery) to encourage the development and learning of new skills to enable integration back into the community and society as a whole.



"I WAS INTERESTED IN KNOWING MORE ABOUT BAKING AND INTERESTED TO FIND OUT ABOUT BRAMBER BAKEHOUSE, BUT I DIDN'T REALISE JUST HOW INTERESTED YOU'D BE IN ME."

Graduate - Cohort 7

## WHO WE ARE AND WHAT WE DO

WE PROVIDE FEMALE SURVIVORS OF HUMAN TRAFFICKING AND MODERN SLAVERY WITH THE CONFIDENCE, KNOWLEDGE AND SKILLS NEEDED FOR A POSITIVE FUTURE BY

- 1 Promoting the general health and wellbeing of survivors
- 2 Providing specific support to develop life and vocational skills
- 3 Providing tailored support to promote independence



THROUGH BAKING WORKSHOPS, WELLBEING SUPPORT AND LIFE SKILLS, BRAMBER BAKEHOUSE EQUIP AND EMPOWER WOMEN ON THEIR JOURNEY TO RESTORATION AND RECOVERY.

BRAMBER BAKEHOUSE RUN PROGRAMMES FOCUSING ON FOUR KEY ELEMENTS:

#### THERAPEUTIC BAKING SKILLS

Women learn a variety of baking skills – from kitchen basics to more complex baking techniques. Each workshop enables women to forge a community, learning alongside others who have experienced similar trauma and isolation because of their past experiences.

#### LIFE SKILLS

We prepare women for independence, giving them the skills needed to engage with voluntary work, paid employment or education.

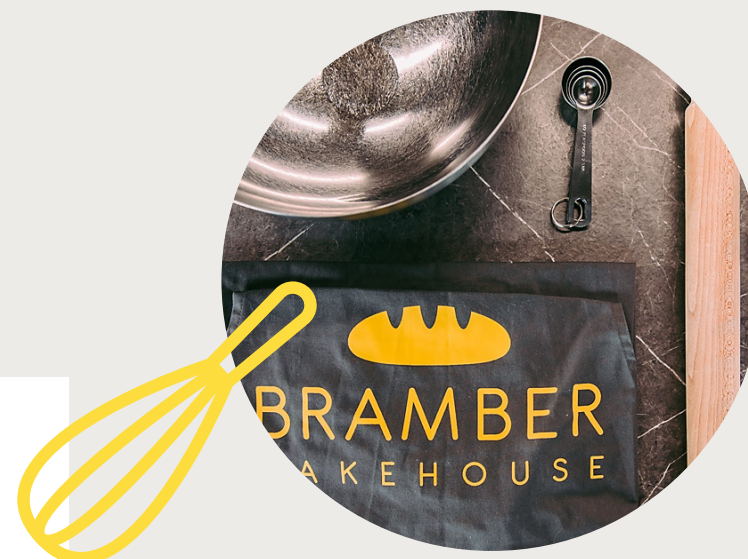
#### WELLBEING SESSIONS

Our wellbeing programme is focused on reducing social isolation, community development connections and peer support, helping survivors feel valued and relaxed, reducing traumatic stress.

Case study analysis shows baking is proven to promote wellbeing, strengthen confidence and self-esteem, whilst providing environments for relationships to flourish.

#### ONGOING SUPPORT

Developing community and relationships outside professional support workers are an integral part of improving mental health, building an independent life and social change.



#### ONE TO WATCH

We are currently working to implement a mentoring programme utilising our dedicated volunteers to deliver further support to survivors.

The Trustees have paid due regard to guidance issued by the Charity Commission in deciding what activities the Charity should undertake.

“Organisations supporting survivors in work have highlighted that access to work helps strengthen a sense of purpose, allowing survivors to maintain and develop skills which provide them with choices and pathways out of exploitation. It also improves mental wellbeing by empowering them to be forward looking with hope for a different future. Finally, it equips survivors with current and relevant work experience and means they can move on from employment gaps which can be difficult to explain to prospective employer”

Access to Work for Survivors of Slavery to Enable  
Independence and Sustainable Freedom, March 2021



# THE JOURNEY



A woman who has experienced human trafficking is referred to Bramber Bakehouse through a referral partner.

**1-2-1**

She receives 1-2-1 support to gain access to education, voluntary work or paid employment.



She is accepted onto the programme, receiving baking, wellbeing and life skills within an inclusive community.



She remains part of an ongoing community of women who support and empower one another.

# DEMOGRAPHICS

IN 2021, AFTER THE EASING OF LOCKDOWN RESTRICTIONS, WE RAN 16 WORKSHOPS.

“I HAVE SEEN BRAMBER BAKEHOUSE IMPACT THE LIVES OF THE WOMEN INVOLVED DESPITE THEIR PAST EXPERIENCE. THE SAFE SPACE WE CREATE FACILITATES RICH CONVERSATIONS, TIME TO REFLECT AND LISTEN. EACH TIME THE WOMEN BECOME JOYFUL AND MORE EQUIPPED TO FACE THE FUTURE.”

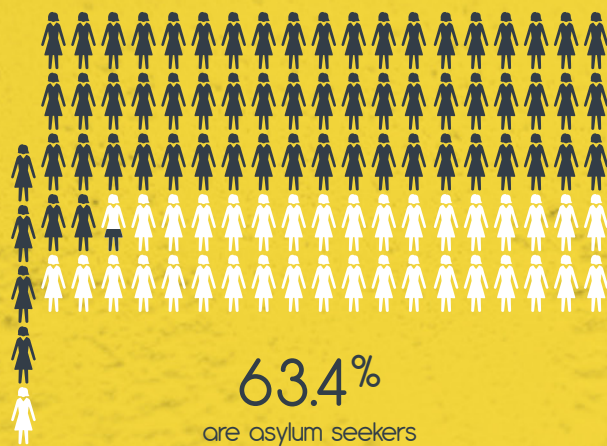
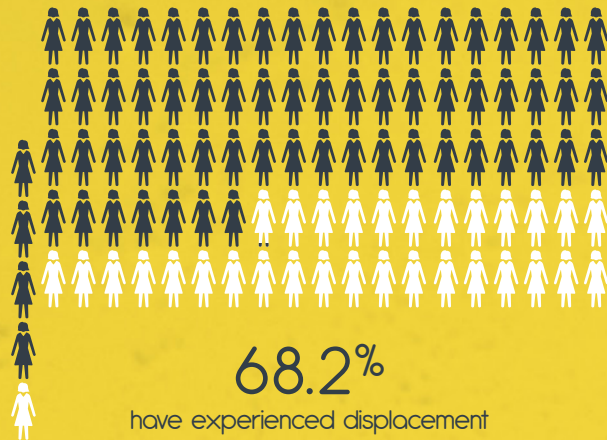
Bramber volunteer

## NATIONALITIES OF ACCEPTED APPLICANTS

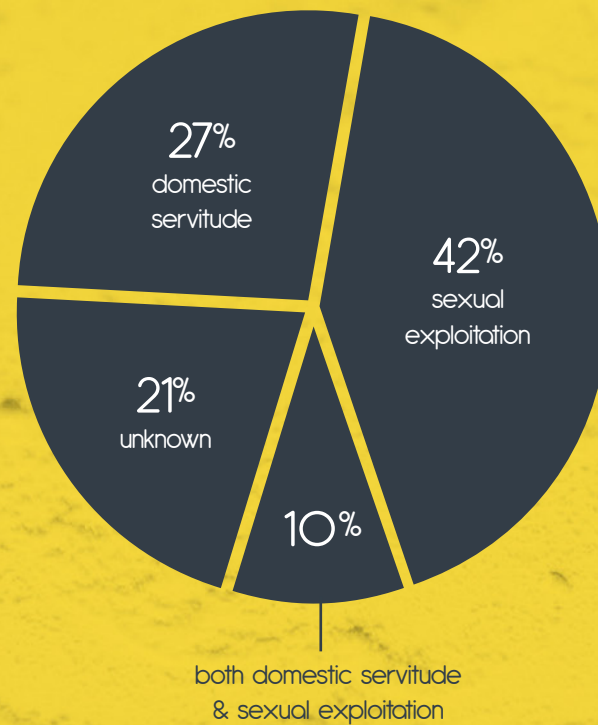


- Albanian
- Nigerian
- British
- Congolese
- Cameroonian
- Caribbean
- Eritrean
- Somalian
- Pakastani
- Latvian
- Grenadian
- Namibian
- Ghancian
- Senegalese
- Gambian
- Ugandan
- Fillipino
- Sudanese

### OF THE WOMEN BRAMBER BAKEHOUSE HAVE SUPPORTED:



### TYPE OF EXPLOITATION



### GEOGRAPHICAL LOCATION



63% have been referred from London  
35% have been referred from the South East  
2% have been referred from the North East

## OUR IMPACT

89%

SAID THEY FELT OPTIMISTIC FOR THE FUTURE AFTER THE PROGRAMME.

89%

SAID THEY WERE MORE ABLE TO MAKE DECISIONS ABOUT THEIR FUTURE AFTER THE PROGRAMME.

100%

SAID THEY AGREED THAT THEY FELT CONFIDENT AFTER THE PROGRAMME TOOK PLACE.

89%

SAID THEY FELT SURROUNDED BY A COMMUNITY AFTER THE PROGRAMME.



"I LIKE THE WAY EVERYONE COMES TOGETHER. WE ALL FORGOT ALL THE DIFFERENCES AND PROBLEMS IN OUR LIFE AND CAME TOGETHER LIKE A FAMILY."

Graduate - Cohort 6



## EMILY'S STORY

Emily\* was trafficked into the UK in 2020. After her rescue, she was referred to Bramber Bakehouse and joined our cohort in July 2021. A keen baker, Emily was quick to learn each bake, taking the recipe home each week to make, sharing delicious baked products with her household. She even surprised our community with homemade chicken pies during our workshop!

During her time on the Bramber Bakehouse programme, Emily worked alongside our Programme Coordinator to identify three goals she'd like to work towards:

- Increase her mental wellbeing through sport and exercise
- Improve her English, Maths and computers skills
- Build her experience with hope of volunteering in the community

With the support of her case worker, working alongside our Programme Coordinator, Emily is undertaking a course via a local training provider for functional skills and computing and is due to start working with the local premiership football team community project to get adults engaged in sport and fitness.

She's also taken up a volunteer role at Bramber Bakehouse, an opportunity, we hope, will help her to grow in confidence, increase her English skills and enable other survivors to learn from her experience.

Alongside this, Emily has just accepted another volunteering opportunity in her local town, enabling her to further her skills and experience.

We are so proud of how far Emily has come and can't wait to see what the future has in store.

\*Names have been changed to protect the identities of the women we support

# HIGHLIGHTS IN 2021

This year we designed a new baking, wellbeing and employability programme, ensuring women are receiving well-rounded support.



Our staff and volunteer community grew with three paid staff members and a further six volunteers helping us make a difference.



In July, we joined together with our staff, volunteers and trustees to celebrate the Queen's Award for Voluntary Service.



In October and December, we welcomed Her Royal Highness, Princess Eugenie and Julia De Boinville, from the Anti-Slavery Collective to share in our programme and journey.



## THE FUTURE

BEYOND OUR HOPES AND GOALS FOR WOMEN, WE HAVE SOME AMBITIOUS INTERNAL GOALS TO DELIVER OUR MISSION MORE EFFECTIVELY.

IN 2021, WE TURNED AWAY 31% OF FEMALE SURVIVORS OF HUMAN TRAFFICKING AND MODERN SLAVERY DUE TO A LACK OF PHYSICAL SPACE TO RUN THE PROGRAMME.

As a result, Bramber Bakehouse are looking for a building – a permanent home – which would enable us to:

- **Accept every women who applies for the programme**
- **Run multiple programmes throughout the week**
- **Develop and expand our programme to reach its' full potential**
- **Expand our reach, supporting other groups of vulnerable women**
- **Provide voluntary and paid work opportunities for female graduates**
- **Create a safe and caring hub for women to drop in and/or meet regularly**
- **Generate income, working towards a model of sustainability and social enterprise**

Since our journey began, we have tried and tested pop-up bakeries, selling baked products with a purpose.

We are actively working towards a model which will see Bramber Bakehouse become semi-self-sustainable, launching a social enterprise bakery providing voluntary opportunities and long-term employment for those we support and empower.

“I HAVE LEARNT THAT I CAN DO EVERYTHING TO CHANGE MY FUTURE. NEVER I WILL STOP TRYING.”

Graduate – Cohort 7

# STRUCTURE, GOVERNANCE & MANAGEMENT

The charity is a company limited by guarantee, as defined by the Companies Act 2006, and is governed by its Memorandum and Articles of Association dated 12 February 2015.

The Trustees, who are also the directors for the purpose of company law, and who served during the period and up to the date of signature of the financial statements were:

**D Preston**  
**H Preston**  
**M Heath**  
**A Read**  
**A Wickens**

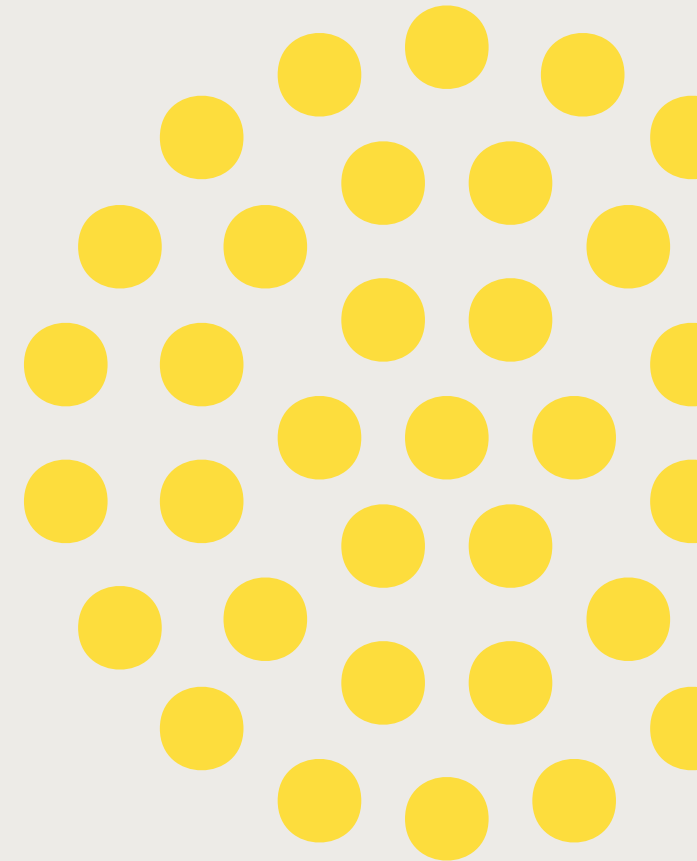
The core Bramber Bakehouse team was restructured to help strengthen the charity and ensure the best in delivery of workshops whilst meeting the growing demand.

New Trustees who can enhance and add to the work of Bramber Bakehouse are nominated, interviewed and appointed through a formal recruitment process, after which a decision is taken by the Trustee Board.

None of the Trustees has any beneficial interest in the company. All of the Trustees are members of the company and guarantee to contribute £10 in the event of a winding up.

During the 2021 accounting year, Bramber Bakehouse used the services of about 30 volunteers to support the charity. These volunteers are split across the baking workshops, wellbeing and life skills programme and areas including marketing, fundraising and administration.

We carry out a rigorous, ongoing risk assessment, have a detailed safeguarding policy in place and all staff and volunteers require a DBS check prior to engagement with Bramber Bakehouse and the women we support.





# STATEMENT OF TRUSTEES' RESPONSIBILITIES

The Trustees, who are also the directors of Bramber Bakehouse for the purpose of company law, are responsible for preparing the Trustees' Report and the financial statements in accordance with applicable law and United Kingdom Accounting Standards (United Kingdom Generally Accepted Accounting Practice).

Company Law requires the Trustees to prepare financial statements for each financial year which give a true and fair view of the state of affairs of the Charity and of the incoming resources and application of resources, including the income and expenditure, of the charitable company for that period.

In preparing these financial statements, the Trustees are required to:

- **select suitable accounting policies and then apply them consistently;**
- **observe the methods and principles in the Charities SORP;**
- **make judgements and estimates that are reasonable and prudent;**
- **state whether applicable UK Accounting Standards have been followed, subject to any material departures disclosed and explained in the financial statements; and**
- **prepare the financial statements on the going concern basis unless it is inappropriate to presume that the Charity will continue in operation.**

The Trustees are responsible for keeping adequate accounting records that disclose with reasonable accuracy at any time the financial position of the Charity and enable them to ensure that the financial statements comply with the Companies Act 2006. They are also responsible for safeguarding the assets of the Charity and hence for taking reasonable steps for the prevention and detection of fraud and other irregularities.

## FINANCIAL REVIEW

BRAMBER BAKEHOUSE HAD A DEFICIT OF **£17,125** (FEB-2021: SURPLUS £44,821) IN THE PERIOD RESULTING IN FUNDS CARRIED FORWARD OF UNRESTRICTED **£6,000** (FEB-2021: £91,766), DESIGNATED £37,803 (FEB-2021: £NIL) AND RESTRICTED **£30,838** (FEB-2021: £NIL).

Bramber Bakehouse's principal source of funds comes through grants from trusts and foundations and monthly support from independent donors.

The main expenditure includes salaries and the running of the Bramber Bakehouse programme including covering transportation costs, materials, ingredients as well as marketing supplies, accounting and administration fees. Each of these aspects are the building blocks which allow the programmes to run, encouraging the development and learning of new skills and enabling integration back into the community and society as a whole for those who participate.

### RESERVES POLICY

This year, we have introduced a Reserves Policy which provides for 3 months of annual expenditure. Donations received have ensured the charity was in a good financial position coming out of lockdown to the extent that we were able to run additional workshops and work towards developing and advancing the programme and support offered to many more women.

The Trustees have acknowledged the need to diversify the income streams, enabling the Charity to become semi-self-sustainable in the long-run, through the sales of baked products as well as continuing donations.

The Trustees have assessed the major risks to which the Charity is exposed, and are satisfied that systems are in place to mitigate exposure to the major risks.

### ADOPTION OF THE ANNUAL REPORT

The Trustees' report was approved by the Board of Trustees on 24th June 2022, and signed on its behalf by Alistair Wickens, Chair of Bramber Bakehouse.



**A Wickens**  
Chair

# ACCOUNTS

## STATEMENT OF FINANCIAL ACTIVITIES INCLUDING INCOME AND EXPENDITURE ACCOUNT

For the period ended 31 December 2021

		Unrestricted funds Dec-2021	Restricted funds Dec-2021	Total Dec-2021	Unrestricted funds Feb-2021	Restricted funds Feb-2021	Total Feb-2021
	Notes	£	£	£	£	£	£
<b>Income from:</b>							
Donations and legacies	3	20,481	31,000	51,481	52,127	816	52,943
Charitable activities	4	344	-	344	-	-	-
<b>Total income</b>		<b>20,825</b>	<b>31,000</b>	<b>51,825</b>	<b>52,127</b>	<b>816</b>	<b>52,943</b>
<b>Expenditure on:</b>							
Raising funds	5	9,496	-	9,496	417	-	417
Charitable activities	6	59,292	162	59,454	6,889	816	7,705
<b>Total resources expended</b>		<b>68,788</b>	<b>162</b>	<b>68,950</b>	<b>7,306</b>	<b>816</b>	<b>8,122</b>
<b>Net (expenditure)/income for the period</b>		<b>(47,963)</b>	<b>30,838</b>	<b>(17,125)</b>	<b>44,821</b>	<b>-</b>	<b>44,821</b>
<b>Net movement in funds</b>							
Fund balances at 1 March 2021		91,766	-	91,766	46,945	-	46,945
<b>Fund balances at 31 December 2021</b>		<b>43,803</b>	<b>30,838</b>	<b>74,641</b>	<b>91,766</b>	<b>-</b>	<b>91,766</b>

The statement of financial activities includes all gains and losses recognised in the period.

All income and expenditure derive from continuing activities.

The statement of financial activities also complies with the requirements for an income and expenditure account under the Companies Act 2006.

## STATEMENT OF FINANCIAL POSITION

As at 31 December 2021

		Dec-2021		Feb-2021	
	Notes	£	£	£	£
<b>Fixed assets</b>					
Property, plant and equipment	11		2,519		-
<b>Current assets</b>					
Cash at bank and in hand		73,262		92,969	
<b>Current liabilities</b>	12	<b>(1,140)</b>		<b>(1,203)</b>	
Net current assets			72,122		91,766
<b>Total assets less current liabilities</b>			<b>74,641</b>		<b>91,766</b>
<b>Income funds</b>					
Restricted funds	13		30,838		
Unrestricted funds					
Designated funds	14	37,803			
Reserve Fund		17,197		-	
Property Fund		20,606		-	
General unrestricted funds	15				
		6,000		91,766	
			<b>43,803</b>		<b>91,766</b>
			<b>74,641</b>		<b>91,766</b>

The company is entitled to the exemption from the audit requirement contained in section 477 of the Companies Act 2006, for the period ended 31 December 2021.

The directors acknowledge their responsibilities for complying with the requirements of the Companies Act 2006 with respect to accounting records and the preparation of financial statements.

The members have not required the company to obtain an audit of its financial statements for the period in question in accordance with section 476.

These financial statements have been prepared in accordance with the provisions applicable to companies subject to the small companies regime.

The financial statements were approved by the Trustees on 1 June 2022

**A Wickens**  
Trustee

Company Registration No. 09437477

## NOTES TO THE FINANCIAL STATEMENTS

### 1 Accounting policies

#### Company information

Bramber Bakehouse is a private company limited by guarantee incorporated in England and Wales. The registered office is Chantry House, 22 Upperton Road, Eastbourne, East Sussex, BN21 1BF.

#### 1.1 Accounting convention

The financial statements have been prepared in accordance with the Charity's Memorandum and Articles of Association, the Companies Act 2006 and "Accounting and Reporting by Charities: Statement of Recommended Practice applicable to charities preparing their accounts in accordance with the Financial Reporting Standard applicable in the UK and Republic of Ireland (FRS 102) (effective 1 January 2019)". The Charity is a Public Benefit Entity as defined by FRS 102.

The Charity has taken advantage of the provisions in the SORP for charities applying FRS 102 Update Bulletin 1 not to prepare a Statement of Cash Flows.

The financial statements are prepared in sterling, which is the functional currency of the Charity. Monetary amounts in these financial statements are rounded to the nearest £.

The financial statements have been prepared under the historical cost convention. The principal accounting policies adopted are set out below.

These financial statements have been prepared for the period 1 March 2021 to 31 December 2021, to bring the financial year in line with the calendar year.

#### 1.2 Going concern

At the time of approving the financial statements, the Trustees have a reasonable expectation that the Charity has adequate resources to continue in operational existence for the foreseeable future. Thus the Trustees continue to adopt the going concern basis of accounting in preparing the financial statements.

#### 1.3 Charitable funds

Unrestricted funds are available for use at the discretion of the Trustees in furtherance of their charitable objectives.

Restricted funds are subject to specific conditions by donors as to how they may be used. The purposes and uses of the restricted funds are set out in the notes to the financial statements.

Endowment funds are subject to specific conditions by donors that the capital must be maintained by the Charity.

#### 1.4 Income

Income is recognised when the Charity is legally entitled to it after any performance conditions have been met, the amounts can be measured reliably, and it is probable that income will be received.

Cash donations are recognised on receipt. Other donations are recognised once the Charity has been notified of the donation, unless performance conditions require deferral of the amount. Income tax recoverable in relation to donations received under Gift Aid or deeds of covenant is recognised at the time of the donation.

Legacies are recognised on receipt or otherwise if the Charity has been notified of an impending distribution, the amount is known, and receipt is expected. If the amount is not known, the legacy is treated as a contingent asset.

Donated goods are measured at fair value, with an equivalent amount recognised as charitable expenditure.

The charity relies significantly upon volunteers. However given the impracticality of measuring their contribution for accounting purposes, volunteer contributions have not been included as income.

#### 1.5 Expenditure

Expenditure is recognised when an obligation exists, payment is probable and the amount can be measured reliably.

#### 1.6 Property, plant and equipment

Property, plant and equipment are initially measured at cost and subsequently measured at cost or valuation, net of depreciation and any impairment losses.

Depreciation is recognised so as to write off the cost or valuation of assets less their residual values over their useful lives on the following basis:

Computers	20% Straight line
-----------	-------------------

The gain or loss arising on the disposal of an asset is determined as the difference between the sale proceeds and the carrying value of the asset, and is recognised in the statement of financial activities.

#### 1.7 Impairment of non-current assets

At each reporting end date, the Charity reviews the carrying amounts of its tangible assets to determine whether there is any indication that those assets have suffered an impairment loss. If any such indication exists, the recoverable amount of the asset is estimated in order to determine the extent of the impairment loss (if any).

#### 1.8 Cash and cash equivalents

Cash and cash equivalents include cash in hand, deposits held at call with banks, other short-term liquid investments with original maturities of three months or less, and bank overdrafts. Bank overdrafts are shown within borrowings in current liabilities.

#### Basic financial assets

Basic financial assets, which include trade and other receivables and cash and bank balances, are initially measured at transaction price including transaction costs and are subsequently carried at amortised cost using the effective interest method unless the arrangement constitutes a financing transaction, where the transaction is measured at the present value of the future receipts discounted at a market rate of interest. Financial assets classified as receivable within one year are not amortised.

## NOTES TO THE FINANCIAL STATEMENTS

### *Basic financial liabilities*

Basic financial liabilities, including trade and other payables and bank loans are initially recognised at transaction price unless the arrangement constitutes a financing transaction, where the debt instrument is measured at the present value of the future payments discounted at a market rate of interest. Financial liabilities classified as payable within one year are not amortised.

Debt instruments are subsequently carried at amortised cost, using the effective interest rate method.

Trade payables are obligations to pay for goods or services that have been acquired in the ordinary course of operations from suppliers. Amounts payable are classified as current liabilities if payment is due within one year or less. If not, they are presented as non-current liabilities. Trade payables are recognised initially at transaction price and subsequently measured at amortised cost using the effective interest method.

### *Derecognition of financial liabilities*

Financial liabilities are derecognised when the Charity's contractual obligations expire or are discharged or cancelled.

#### **1.9 Employee benefits**

The cost of any unused holiday entitlement is recognised in the period in which the employee's services are received.

Termination benefits are recognised immediately as an expense when the Charity is demonstrably committed to terminate the employment of an employee or to provide termination benefits.

#### **1.10 Retirement benefits**

Payments to defined contribution retirement benefit schemes are charged as an expense as they fall due.

#### **2.0 Critical accounting estimates and judgements**

In the application of the Charity's accounting policies, the Trustees are required to make judgements, estimates and assumptions about the carrying amount of assets and liabilities that are not readily apparent from other sources. The estimates and associated assumptions are based on historical experience and other factors that are considered to be relevant. Actual results may differ from these estimates.

The estimates and underlying assumptions are reviewed on an ongoing basis. Revisions to accounting estimates are recognised in the period in which the estimate is revised where the revision affects only that period, or in the period of the revision and future periods where the revision affects both current and future periods.



## NOTES TO THE FINANCIAL STATEMENTS (CONTINUED)

## 3 Donations and legacies

	Unrestricted funds Dec-2021	Restricted funds Dec-2021	Total Dec-2021	Unrestricted funds Feb-2021	Restricted funds Feb-2021	Total Feb-2021
	£	£	£	£	£	£
Donations and gifts	15,481	-	15,481	51,777	816	52,593
Grants	5,000	31,000	36,000	-	-	-
Donated goods	-	-	-	350	-	350
	<b>20,481</b>	<b>31,000</b>	<b>51,481</b>	<b>52,127</b>	<b>816</b>	<b>52,943</b>

## Donations and gifts

Donations	13,633	-	13,633	50,487	816	51,303
Gift aid	1,848	-	1,848	1,290	-	1,290
	<b>15,481</b>	<b>-</b>	<b>15,481</b>	<b>51,777</b>	<b>816</b>	<b>52,593</b>

## 4 Charitable activities

	Dec-2021	Feb-2021
	£	£
Sales within charitable activities	344	-

## 5 Raising funds

	Unrestricted funds Dec-2021	Unrestricted funds Feb-2021
	£	£
<b>Fundraising and publicity</b>		
Charity checkout and paypal fees	-	252
Marketing & Communications	2,286	165
Contracted staff	6,400	-
Merchandise	810	-
	<b>9,496</b>	<b>417</b>

## NOTES TO THE FINANCIAL STATEMENTS (CONTINUED)

6 Charitable activities		
	Dec-2021	Feb-2021
	£	£
Staff costs	30,325	1,803
Depreciation and impairment	630	-
Workshops incl donated goods	3,119	884
Travel and training costs	7,154	517
Telephone Bills	387	14
Beneficiary graduation packs	600	-
Postage, freight and courier	219	360
Insurance	-	846
Office equipment	2,477	6
Premises rent	3,079	-
Kitchen hire	2,875	-
Events	1,275	-
	<b>52,140</b>	<b>4,430</b>
Grant funding of activities (see note 7)	-	450
Share of support costs (see note 8)	3,406	659
Share of governance costs (see note 8)	3,908	2,166
	<b>59,454</b>	<b>7,705</b>
<b>Analysis by fund</b>		
Unrestricted funds	59,292	6,889
Restricted funds	162	816
	<b>59,454</b>	<b>7,705</b>

7 Grants payable		
	Dec-2021	Feb-2021
	£	£
Grants to individuals	-	450
	-	<b>450</b>



## NOTES TO THE FINANCIAL STATEMENTS (CONTINUED)

## 8 Support costs

	Support costs	Governance costs	Total Dec-2021	Support costs	Governance costs	Total Feb-2021
	£	£	£	£	£	£
Subscriptions and professional fees	1,502	-	1,502	526	-	526
Sundry expenses	388	-	388	133	-	133
Computer costs	1,370	-	1,370	-	-	-
Utilities	146	-	146	-	-	-
Accountancy	-	1,536	1,536	-	1,080	1,080
Legal and professional	-	2,372	2,372	-	1,310	1,310
Bank fees	-	-	-	-	(224)	(224)
	<b>3,406</b>	<b>3,908</b>	<b>7,314</b>	<b>659</b>	<b>2,166</b>	<b>2,825</b>
<b>Analysed between Charitable activities</b>	<b>3,406</b>	<b>3,908</b>	<b>7,314</b>	<b>659</b>	<b>2,166</b>	<b>2,825</b>

## 9 Trustees

None of the Trustees (or any persons connected with them) received any remuneration or benefits from the Charity during the period.

The total amount of donations funded by trustees (and connected parties) was £100 (Feb-2021: £510). No other transactions have taken place with related parties during the year.

## 10 Employees

The average monthly number of employees during the period was:

	Dec-2021	Feb-2021
	3	1
<b>Employment costs</b>		
	£	£
Wages and salaries	29,442	1,750
Other pension costs	883	53
	<b>30,325</b>	<b>1,803</b>

There were no employees whose annual remuneration was more than £60,000.

## NOTES TO THE FINANCIAL STATEMENTS (CONTINUED)

11 Property, plant and equipment	
	Computers
	£
<b>Cost</b>	
Additions	3,149
At 31 December 2021	3,149
<b>Depreciation and impairment</b>	
Depreciation charged in the period	630
At 31 December 2021	630
<b>Carrying amount</b>	
At 31 December 2021	2,519

12 Current liabilities		
	Dec-2021	Feb-2021
	£	£
Other Taxation and National Insurance	-	123
Accruals and deferred income	1,140	1,080
	<b>1,140</b>	<b>1,203</b>

13 Restricted funds						
The income funds of the charity include restricted funds comprising the following unexpended balances of donations and grants held on trust for specific purposes:						
	Movement in funds			Movement in funds		
	Incoming resources	Resources expended	Balance at 1 March 2021	Incoming resources	Resources expended	Balance at 31 December 2021
	£	£	£	£	£	£
IT Fund	816	(816)	-	6,000	(162)	5,838
Baker Fund	-	-	-	5,000	-	5,000
Workshop Fund	-	-	-	15,000	-	15,000
Programme Coordinator Fund	-	-	-	5,000	-	5,000
	<b>816</b>	<b>(816)</b>	<b>-</b>	<b>31,000</b>	<b>(162)</b>	<b>30,838</b>

The IT Fund represents monies given to purchase laptops and other IT equipment. The balance carried forward was spent during 2022.

The Baker Fund represents monies given towards the salary of a Baker to be hired.

The Workshop Fund represents monies given towards the running of workshops.

The Programme Coordinator Fund represents monies given towards the salary of a Programme Coordinator to be hired.

## NOTES TO THE FINANCIAL STATEMENTS (CONTINUED)

**14 Designated funds**

The income funds of the charity include the following designated funds which have been set aside out of unrestricted funds by the trustees for specific purposes:

	Balance at 1 March 2021	Transfers	Balance at 31 December 2021
	£	£	£
Reserve Fund	-	17,197	17,197
Property Fund	-	20,606	20,606
	-	<b>37,803</b>	<b>37,803</b>

The Reserve Fund represents 3 months of general operational expenditure set aside inline with the charities reserves policy.

The Property Fund represents monies set aside to cover the cost of a deposit on a property.

**15 Analysis of net assets between funds**

	Unrestricted funds Dec-2021	Designated funds Dec-2021	Restricted funds Dec-2021	Total Dec-2021	Unrestricted funds Feb-2021	Restricted funds Feb-2021	Total Feb-2021
	£	£	£	£	£	£	£
Fund balances are represented by:							
Property, plant and equipment	2,519	-	-	2,519	-	-	-
Current assets/(liabilities)	3,481	37,803	30,838	72,122	91,766	-	91,766
	<b>6,000</b>	<b>37,803</b>	<b>30,838</b>	<b>74,641</b>	<b>91,766</b>	<b>-</b>	<b>91,766</b>

**16 Related party transactions**

During the period the charity paid Truebyte, a firm of which Matt Heath is a director, £4,920 (Feb-2021: £nil) for IT equipment and tech support.

# INDEPENDENT EXAMINER'S REPORT

I report to the Trustees on my examination of the financial statements of Bramber Bakehouse (the Charity) for the period ended 31 December 2021.

## Responsibilities and basis of report

As the Trustees of the Charity (and also its directors for the purposes of company law) you are responsible for the preparation of the financial statements in accordance with the requirements of the Companies Act 2006 (the 2006 Act).

Having satisfied myself that the financial statements of the Charity are not required to be audited under Part 16 of the 2006 Act and are eligible for independent examination, I report in respect of my examination of the Charity's financial statements carried out under section 145 of the Charities Act 2011 (the 2011 Act). In carrying out my examination I have followed all the applicable Directions given by the Charity Commission under section 145(5)(b) of the 2011 Act.

## Independent examiner's statement

I have completed my examination. I confirm that no matters have come to my attention in connection with the examination giving me cause to believe that in any material respect:

1. accounting records were not kept in respect of the Charity as required by section 386 of the 2006 Act; or
2. the financial statements do not accord with those records; or
3. the financial statements do not comply with the accounting requirements of section 396 of the 2006 Act other than any requirement that the accounts give a true and fair view which is not a matter considered as part of an independent examination; or
4. the financial statements have not been prepared in accordance with the methods and principles of the Statement of Recommended Practice for accounting and reporting by charities applicable to charities preparing their accounts in accordance with the Financial Reporting Standard applicable in the UK and Republic of Ireland (FRS 102).

I have no concerns and have come across no other matters in connection with the examination to which attention should be drawn in this report in order to enable a proper understanding of the financial statements to be reached.



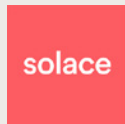
**John Caladine FCCA CTA FCIE**

24th June 2022

Caladine Limited  
Chantry House  
22 Upperton Road  
Eastbourne  
East Sussex  
BN21 1BF

## PARTNERSHIPS

Our partners provide ongoing support, including round-the-clock care and accommodation, for survivors of human trafficking and modern slavery. Providing referrals to Bramber Bakehouse enables support and care to interlink, across organisations. We're proud to partner with the following organisations:



RESTORE



We were able to offer places to 69% of referrals in 2021.

“IT HAS BEEN GREAT TO PARTNER WITH BRAMBER BAKEHOUSE AND TO LEARN OF THE AMAZING SUPPORT AND OPPORTUNITIES THAT OUR CLIENTS HAVE HAD THROUGH THEIR INNOVATIVE PROGRAMME. FOR THE INDIVIDUALS WHO HAVE BENEFITTED FROM YOUR PROGRAMME, THE IMPACT ON THEIR LIVES HAS BEEN TRULY TRANSFORMATIONAL.”

Garry Smith, CEO, Medaille Trust

We are pleased to partner with Smart Works & Bright Future – providing opportunities for survivors to flourish, gaining further access to employment skills and work placements after leaving the Bramber Bakehouse programme.

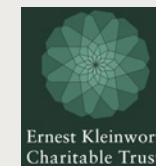
SMART  
WORKS

Bright  
Future

# FUNDERS

Bramber Bakehouse are so grateful to the individual donors and organisations who support our ongoing work.

Some of our funders include:



If you would like to donate and support our work, please get in touch.  
[hello@bramberbakehouse.co.uk](mailto:hello@bramberbakehouse.co.uk)

# LEGAL AND ADMINISTRATIVE INFORMATION

## **Trustees**

D Preston  
H Preston  
M Heath  
A Read  
A Wickens

## **Secretary**

A Maffey

## **Charity number**

1172837

## **Company number**

O9437477

## **Principal address**

P O Box 3197  
Eastbourne  
East Sussex  
BN21 9QJ

## **Registered office**

Chantry House  
22 Upperton Road  
Eastbourne  
East Sussex  
BN21 1BF

## **Independent Examiner**

John Caladine FCCA CTA FCIE  
Caladine Limited  
Chantry House  
22 Upperton Road  
Eastbourne  
East Sussex  
BN21 1BF

## **Bankers**

HSBC  
94 Terminus Road  
Eastbourne  
East Sussex  
BN21 3ND



# BRAMBER BAKEHOUSE

PO Box 3197, Eastbourne,  
East Sussex, BN21 9QJ

[hello@bramberbakehouse.co.uk](mailto:hello@bramberbakehouse.co.uk)

[WWW.BRAMBERBAKEHOUSE.CO.UK](http://WWW.BRAMBERBAKEHOUSE.CO.UK)

Registered Charity 1172837

